



Western Integrated Technologies

MECHANICAL • FLUID POWER SYSTEMS • ELECTRICAL



**Commercial
Intertech**

Gear Pumps & Motors

Western Integrated Technologies has recently added the Parker Hannifin Cast Iron gear pumps/motors for the Bushing and Bearing series to our growing list of WIT QUICK SHIP BUILD CENTER programs.

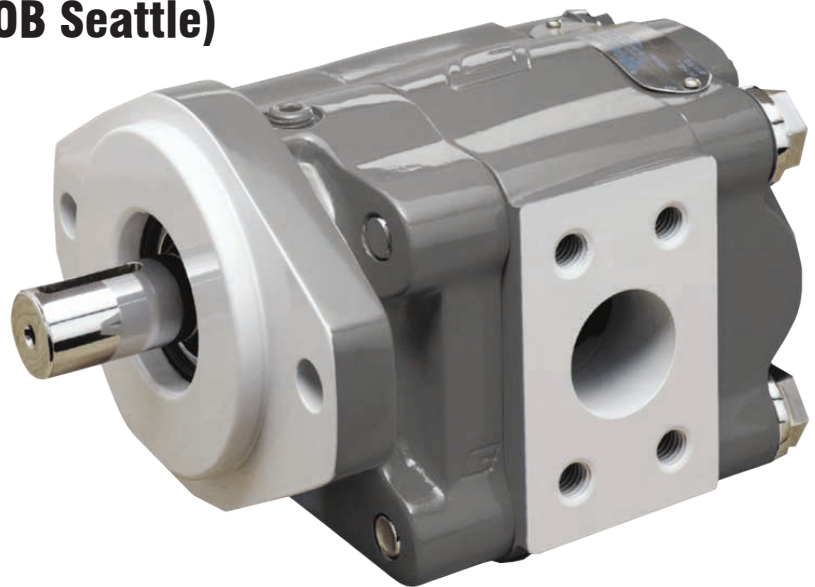
- **Extensive Inventory**
- **Build to Order**
- **Factory Authorized**
- **Genuine Parker**
- **Quick Ship (1-2 days on most units)**
- **Pacific Time Zone (FOB Seattle)**

Bearing & Bushing Units

4500 PSI max pressure

0.62 - 12.30 in³/rev

Series: 20, 30/31, 50/51, 75/76,
315/415, 330/430, 350/450, 365/465



Eddie Metcalf

425.653.7033

emetcalf@westernintech.com

Craig Stafford

425.653.7014

cstafford@westernintech.com

www.westernintech.com